



Serving You For Over 50 years

Online Product Catalog

www.SedcoPier.com



Table of Contents

Foundation Systems.....	A
The Base Wall.....	1-2
Support Master.....	3-4
Support Products.....	B
Support Pier.....	1
Perimeter Pier.....	2
Tops & Safety Jacks.....	3
Marriage Tie / Porch Anchor / Squeak Ender.....	4
Base Pads/Wood Pads.....	5
Tie Downs / Cross Drive.....	6
CP Seismic Pier.....	7
Tools.....	C
Drive Machine.....	1
Jacks / Water Levels.....	2
Roller Systems.....	3
Rollers / Head Plates.....	4
Plastic & Strapping.....	D
Barriers / Plastics / Flex Mend / Strapping.....	1
Hardware.....	E
Bolts / Lags / Screws.....	1
Nails / Shackle / Bolts / Wheel Bolts.....	2
Electrical Supply.....	F
Ground Rod / Ground Clamp.....	1
Pedestal / Service Pole.....	2
Flex Conduit / Connector / Power Cord.....	3
Pole Box / Pole Rope / Fittings.....	4
PVC / 90° / 45° / Conduit.....	5
PVC / Fittings / Lugs / Cement.....	6
Plumbing Supply.....	G
Copper / Pipe / Fittings.....	1
CPVC / Pipe / Fittings.....	2
Shark Bite / PVC / Fittings / Pipe.....	3
Flux / PVC / CPVC / Cement.....	4
Sweat Stop / Dual Outlet /	5
Brass / Valves / Water Sets / Regulators.....	6
Flex Lines / Toilet.....	7
Surrounds / Bathtubs / Shower Pans.....	8
Shower Drain / Glass Doors.....	9
Water Heater Door and Frame.....	10
Water Heater.....	11
Gas Flex / Earthquake Valve.....	12
Polyethylene Gas Pipe / Fittings / Risers.....	13
Black Fittings.....	14
Galvanized Fittings.....	15
Black Pipe / Galvanized Pipe.....	16

Table of Contents

Roofing	H
Roofcoat / Roof Patch / Polyester Roof Tape.....	1
Peel-N-Seal / Rain Gutter / Drip Rail	
Rolled Aluminum Roofing / Roof Cap.....	2
Roof Vent / Sheet Foam.....	3
Skirting	I
Vinyl Skirting / Allvent Panels / Rail Kit.....	1
Rail Set.....	2
Hardie / Smart Panel / Treated Lumber / Skirting Vents.....	3
Vinyl Skirting.....	4
Patio Covers & Decking	J
Step Moulding / Carpet Bar.....	1
Carpet.....	2
Hand Rail / Post Base / End Caps.....	3
Flat Pan / Aluminum Hand Rail.....	4
Custom Patio Covers.....	5
Tri-V Kit / Flat Pan Kit.....	6
Awning Gutters / Pans / Hangers / WindBars.....	7
Down Spouts / Elbows / Drop Outlet.....	8
Awning Post / Offset Post.....	9
Window Awning / Privacy Awning.....	10
Septic / Sewer	K
Poly Tanks / Fiber Glass Tanks.....	1
Risers / Lids.....	2
D-Box / Extend Lock / Rosin Paper.....	3
Chambers / Ends.....	4
SCH35 PVC Pipe / Fittings.....	5
3" A.B.S. Fittings.....	6
Rubber Couplings / A.B.S. Pipe.....	7
Cooler	L
Pump / Roof Jack / Motor Kit.....	1
Cooler / Wire / Pump Installation Kit.....	2
Doors	M
In Swing / Out Swing.....	1
Water Storage	N
Vertical Above Ground Tanks.....	1
H.V.A.C	O
Ducting / Vent.....	1
Air Conditioner Pad	P
Base Pad AC Pad Line.....	1

BASE WALL



Pit Set Foundation System



4000
The Base Wall Panel
2"x23"x40"




The Base Wall is fast and easy to install. This project on a 32'x66' home was started at 9:00am.



By 4:00pm the Base Wall was completely installed and concrete pumped, using a 4 man crew.



• 48 panels per skid, 700 lbs.

- Save up to 50% over block perimeter foundation
- Call for Free Estimates
- In stock-ready for pick-up or delivery
- Easy installation-saves time and labor. Typical install in less than 6 hours.
- Designed for backfill applications
- Made of 100% recycled composite materials 
- Stronger, lighter & more durable than concrete
- Cut height and length for fast and easy installation
- Self-supporting structural wall
- Paintable or cover with siding
- Light weight-saves on shipping and handling. Each panel only weighs 26 lbs
- UV stable
- Easy installation of vents & access doors
- No need for double sets
- Less inspections needed compared to block walls
- Will not rust or rot
- Great for high mineral contact soil

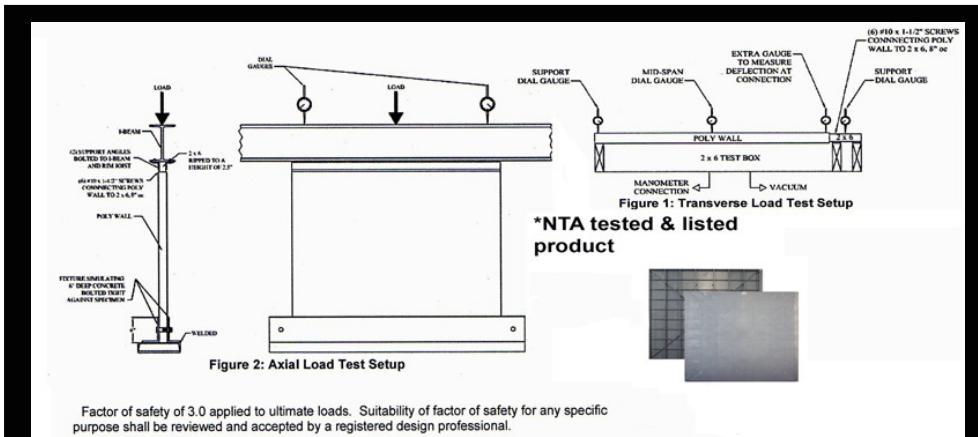


4001
The Base Wall Corner



4004
The Base Wall Hardware Kit

BASE WALL



The Base Wall Vertical Load Test

Factor of safety of 3.0 applied to ultimate loads. Suitability of factor of safety for any specific purpose shall be reviewed and accepted by a registered design professional.

FHA-HUD COMPLIANT FOUNDATION

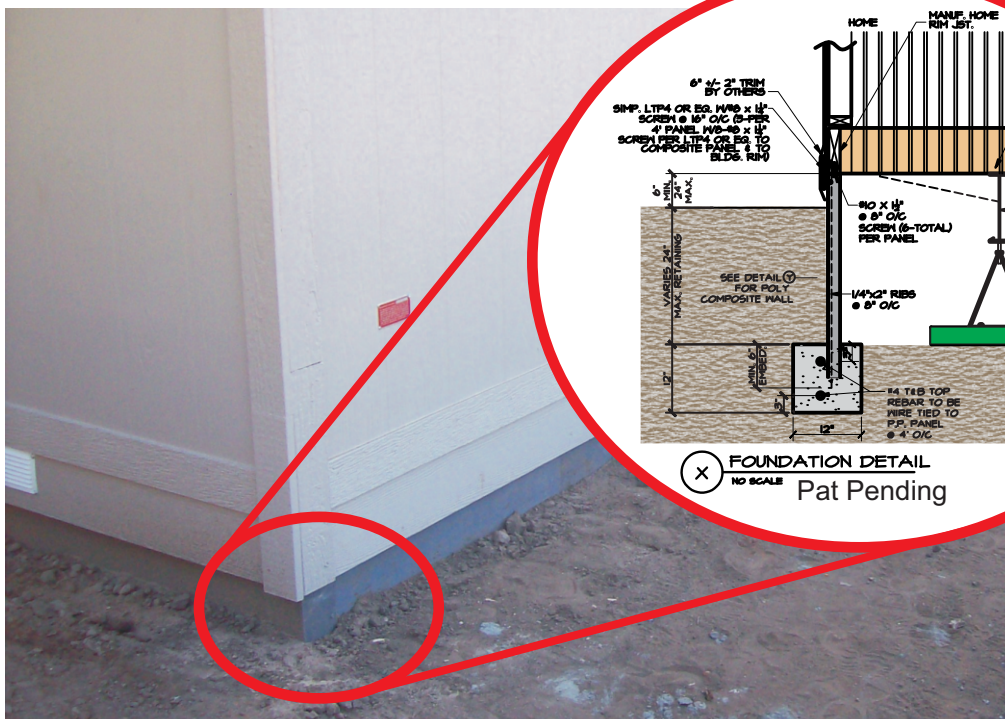
THIS PERMANENT PERIMETER FOUNDATION MEETS HUD FOUNDATION REQUIREMENTS FOR MANUFACTURED HOMES, ACCORDING TO THE CRITERIA OF HUD'S "PERMANENT FOUNDATION GUIDE FOR MANUFACTURED HOUSING" (HUD-7487) OF SEPTEMBER 1996.



Foundation plan approval by

State of California
Department of Housing and
Community Development

S.P.A. # 112-2F



SUPPORT MASTER

FOUNDATION SYSTEM



- Engineered Tie Down System
- Earthquake Bracing System
- Permanent Foundation System



Made of 100% recycled composite materials

24"x24" Base Pad

Meets or Exceeds

HUD Model Manufactured Home Installation Standards dated October 2017

2022 California Building Code
 2021 International Residential Code
 2021 International Building Code
 433-A Reverse Mortgage
 E.R.B.S. SEISMIC Zone D
 Listing #1053-4
 E.T.S. SB-750 Wind
 S.P.A. # E.T.S. 133

Factor of safety of 3.0 applied to ultimate loads. Suitability of factor of safety for any specific purpose shall be reviewed and accepted by a registered design professional.

FHA-HUD COMPLIANT FOUNDATION
 THIS PERMANENT FOUNDATION MEETS HUD FOUNDATION REQUIREMENTS FOR MANUFACTURED HOMES, ACCORDING TO THE CRITERIA OF HUD's "PERMANENT FOUNDATION GUIDE FOR MANUFACTURED HOUSING" (HUD-7487) OF SEPTEMBER 1996.



Foundation plan approval by

State of California
 Department of Housing and
 Community Development

SPA #112-IF

Ultimate Load
 BSK Vertical Test 70,000 lbs.
 11011-18K



SUPPORT MASTER

FOUNDATION SYSTEM

A Height	B Max Height	C Base Width	D Leg Gauge	E Stiffer	Part # With Top
6"	11"	8"	6	N/A	SM06
10"	15.5"	8"	6	N/A	SM10
14"	19.5"	12"	6	N/A	SM14
18"	22.5"	16"	6	1	SM18
22"	27"	16"	6	1	SM22
26"	31"	16"	6	2	SM26
30"	35"	16"	6	2	SM30

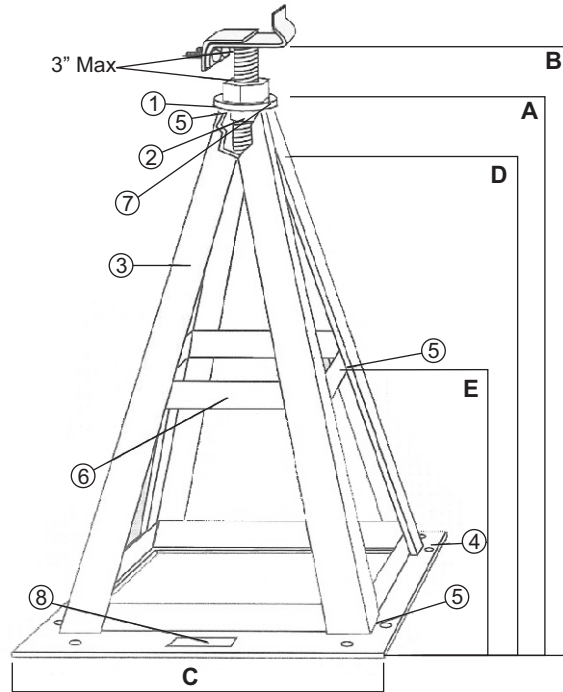


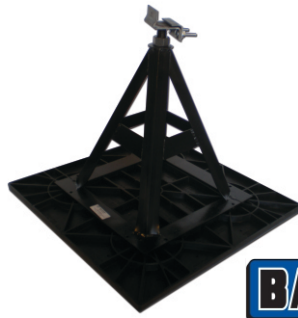
IMAGE DETAILS

- 1) 1" X3/16" GA. STD Flatwasher ASTM A36
- 2) 1 1/4" O.D. x 10 GA.x1" Roll Tube ASTM A36
- 3) 1.5"x1.5" Angle Legs ASTM A36
- 4) 2" x 8 GA. Flat Base with 8 Pre-Punched 1/4" Holes ASTM A36
- 5) Weld Width 1/4" ER 705-X
- 6) 2"x6"x3/16" Stiffer ASTM A36
- 7) Double Nut (Optional) For Additional 1" Adjustment
- 8) BSK#1503-4 E.T.S., EBRS, Foundation 6" to 30" 18,000 lbs.

*Based on Tested Ultimate Load Divide by a Factor of 3



Support Master
with Top



Support Master
with 24"x24" Base Pad



Single Wide
Only

SM01
14" Ground Pin



SM02
I-Beam or Channel Top



SM02F
Formed Top

Support Products

Steel Support Pier

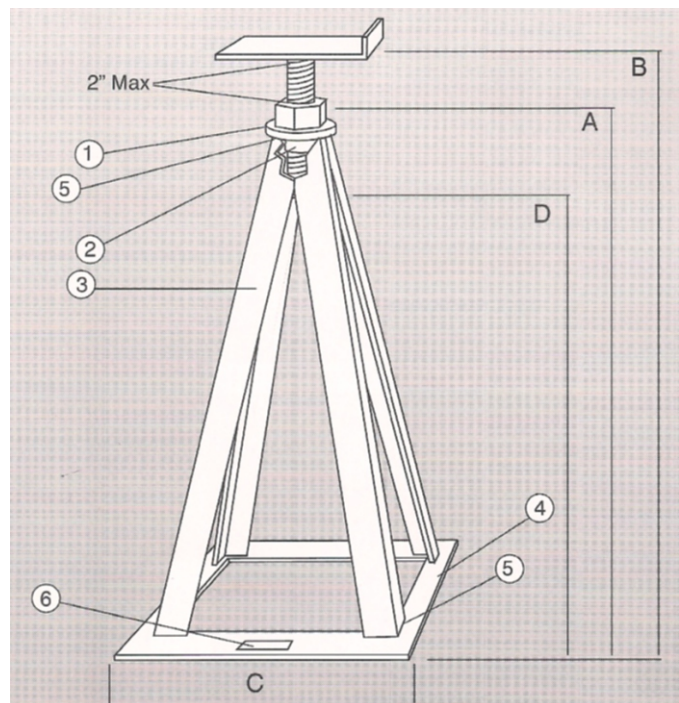
A	B	C	D	Part #
Height	Max Height	Base Width	Leg Gauge	
6"	9"	7 1/4"	11	4006
8"	11"	7 1/4"	11	4008
10"	13"	9 1/4"	11	4010
12"	15"	9 1/4"	11	4012
14"	17"	11 1/4"	12	4014
16"	19"	11 1/4"	12	4016
18"	21"	11 1/4"	12	4018
20"	23"	11 1/4"	11	4020
22"	25"	11 1/4"	11	4022
24"	27"	11 1/4"	11	4024
26"	29"	11 1/4"	11	4026
28"	31"	11 1/4"	11	4028
30"	33"	11 1/4"	11	4030



IMAGE DETAILS

- 1) 3/4" X11 GA. SAE Flatwasher ASTM A36
- 2) 1" O.D. x 13 GA. x1" Roll Tube ASTM A36
- 3) 1"x1" Formed Angle Legs ASTM A36
- 4) 1 1/4" x 13 GA. Flat Base ASTM A36
- 5) Weld Width 1/4" ER 705-X
- 6) Embossed Label SEDCO BSK #1976-1
6" to 16" 4000 LBS 18" to 30" 3000 LBS*

*Based on Tested Ultimate Load Divide by a Factor of 3



H.C.D. Approval

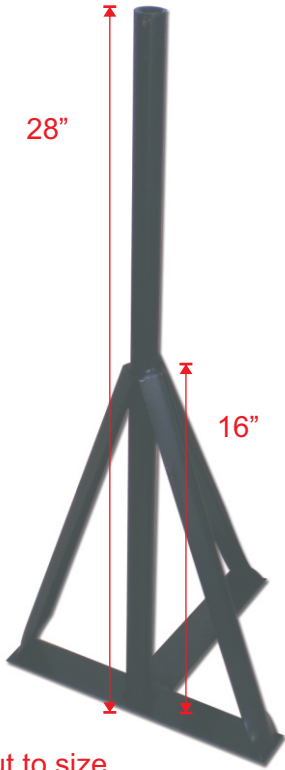


Support Products

Perimeter Pier

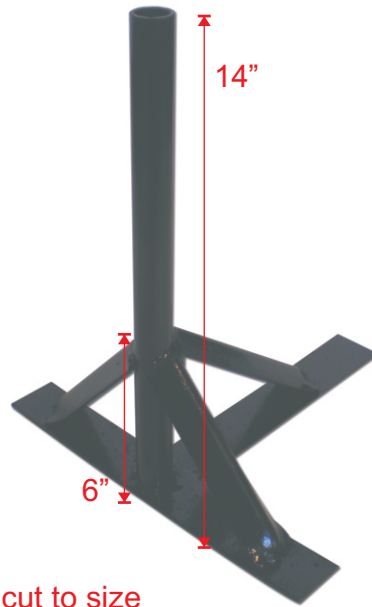


1004
4"x6"x36" Perimeter Blocking



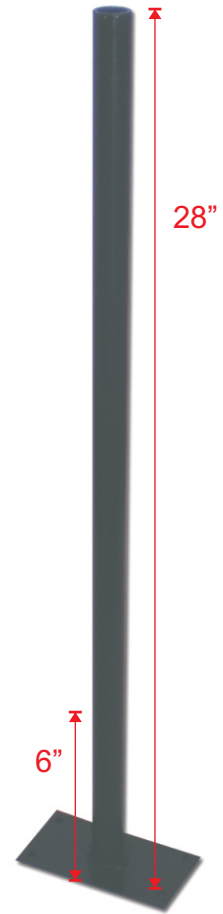
cut to size

1007
T-3 Large Perimeter Pier 28"



cut to size

1005
T-3 Small Perimeter Pier 14"



cut to size

1008
Post Perimeter Pier 28"



H.C.D. Approval



SEDCO BSK # 1053-2
6" to 28" 4000 lbs.

Support Products

Tops & Safety Jacks

The Original Locking Top



3001
Regular Top



3003
Saddle Top

3003B
Saddle Top



3005
Slider Top 3"-3.5"

3005B
Slider Top 3"-3.5"



3007
Slider Top 5.5"-7.5"

3007B
Slider Top 5.5"-7.5"



3002 / 3004
3" Safety Jack

30023
3.5" Safety Jack

30024
4.5" Safety Jack

30025
5.5" Safety Jack



3006
Safety Jack
Rolled formed



3008
Flat Top



Support Products

Marriage Tie / Porch Anchor / Squeak Ender



1009

Marriage Tie Small 33.5" to 63"

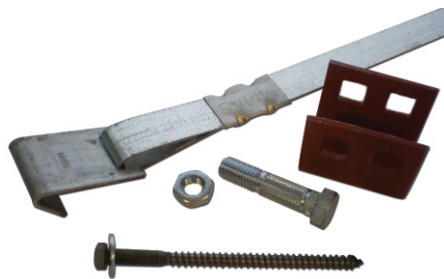
1010

Marriage Tie Large 42" to 72"



1011

1" Coupling Nut
with 1"x18" All Thred



1023

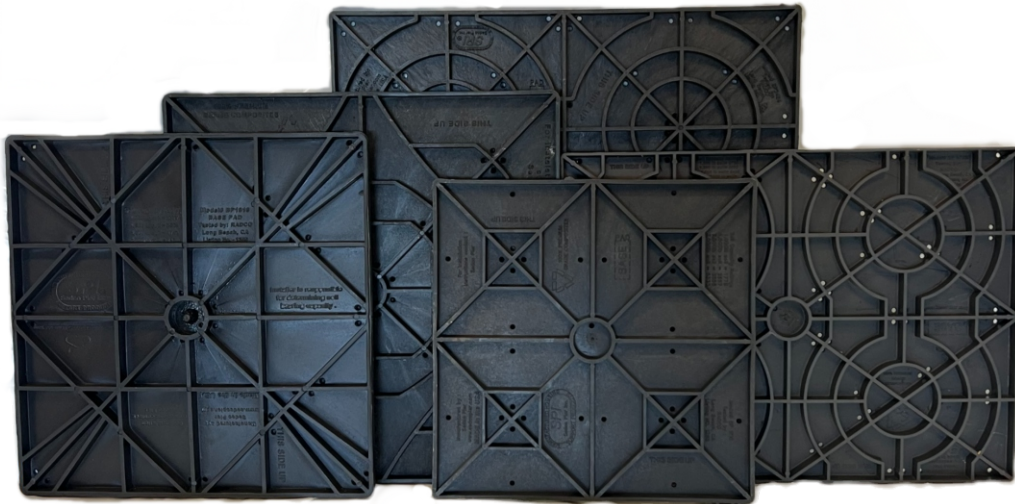
Porch Anchor Set



1029

Squeak Ender

Support Products



1005
24"x24"

1031
20"x20"

1033
17"x23"

1002
18.5"x18.5"

1025
16"x16"



Round Base Pad

BP10
10" Round
BP16
16" Round



A.C.Q. Treated Wood Pad

1000
2"x12"x30" Treated Wood Pad
1001
2"x12"x24" Treated Wood Pad



H.C.D. Approval

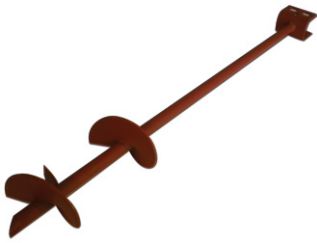


Support Products

DISTRIBUTOR OF



Tie Downs / Cross Drive



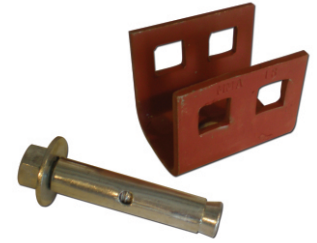
1013
D.H. Double Disc Auger



1014
E.Z. Auger



1015
Stabilizer Plate



1016
Concrete Anchor
1024
Concrete Anchor No Bolts



1017
Cross Drive Anchor with Rods
1022
Cross Drive Rods only



1018
Hole Strap - 7'



1019
Buckle Strap - 7'



1020
Hook Strap - 7'



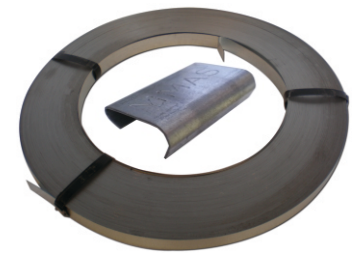
1021
Split Bolt & Nut



8232
18" Auger Large Top
8241
20" Auger Large Top



8243
18" Auger Small Top

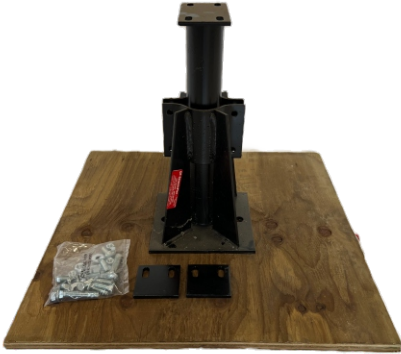


1026
600' Galvanized Strap
1027
Strap Seal

Support Products

CP Foundation Piers

The CP Seismic Pier, is designed for use on Mobile Home Foundation Systems, Tie-Down Systems, and Earthquake Resistant Bracing Systems.



CP Seismic Pier on Wood Pad Complete

CP007

Small: Adjustment 7³/₄"-10³/₄"

CP009

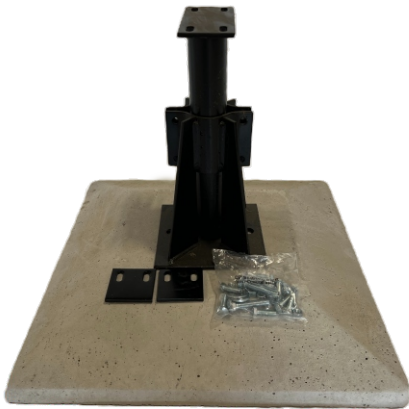
Medium: Adjustment 11¹/₂"-18³/₄"

CP016

Large: Adjustment 16³/₄"-23³/₄"

CP019

Extra Large: Adjustment 19³/₄"-33³/₄"



CP Seismic Pier on Concrete Pad Complete

CP020

Small: Adjustment 10¹/₂"-13¹/₂"

CP021

Medium: Adjustment 11³/₄"-18³/₄"

CP022

Large: Adjustment 19¹/₂"-26¹/₂"

CP023

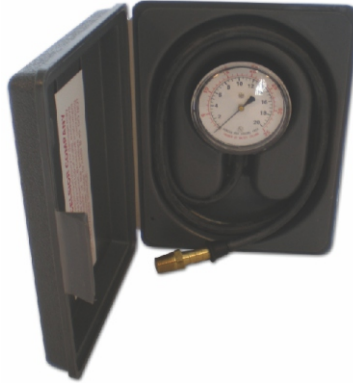
Extra Large: Adjustment 22¹/₂"-36"

**CP001**

Concrete Pad

Tools

Drive Machine / Awning Stand / Come-A-Long



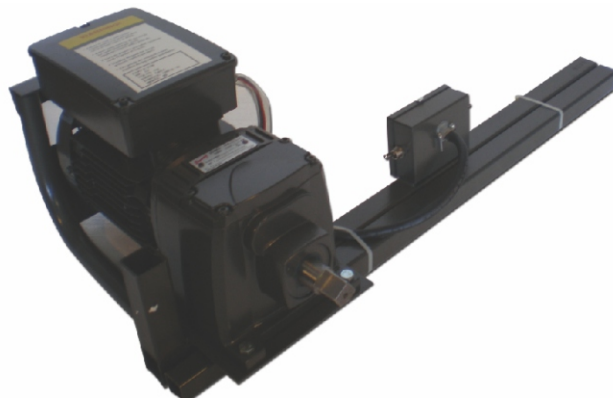
5124
Gas Test Kit



5130
Drive Head



5154
Drive Head Large



5129
Drive Machine

Tools

Jacks / Water Level



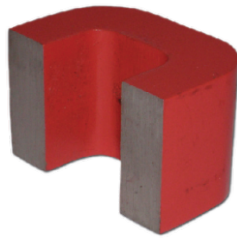
5109
Water Level



5110
Water Level Tank



5144
Valve & Magnet
for Water Level



5112
Water Level Magnet



5111
Water Level Hose 3/8"x 100'



5114
Norco 12 Ton Jack Standard



5116
Norco 20 Ton Jack Standard

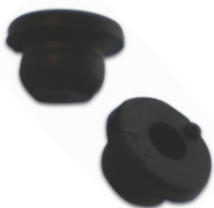


5118
Norco 12 Ton Repair Kit

5115
Norco 12 Ton Jack Low

5117
Norco 20 Ton Jack Low

5119
Norco 20 Ton Repair Kit



5121
Jack Plug 2 Pack



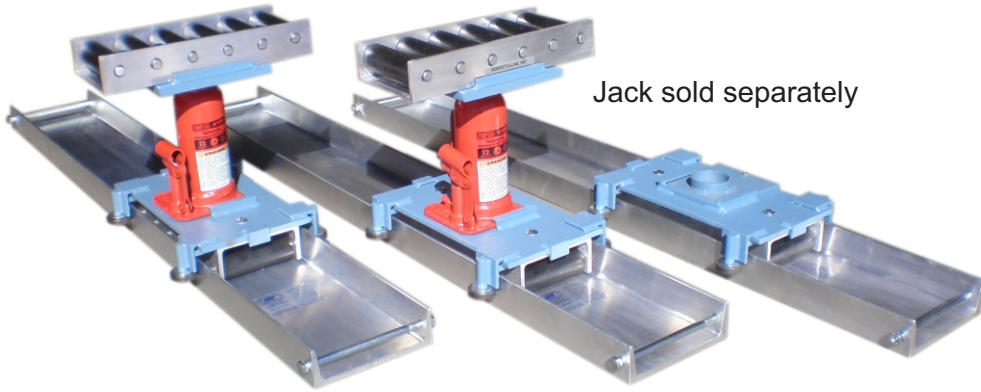
5122
Hydraulic Oil



5113
Jack Handle

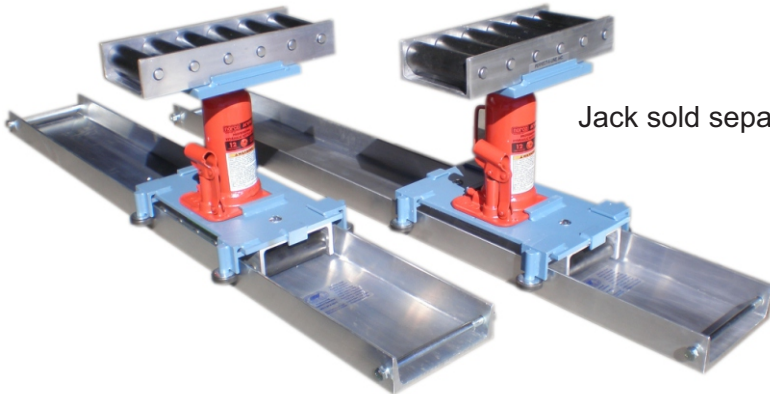
Tools

Roller Systems



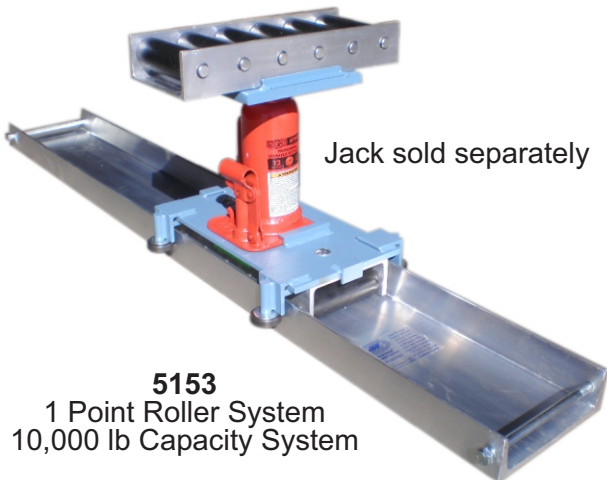
Jack sold separately

5100
3 Point Roller System
30,000 lb Capacity System



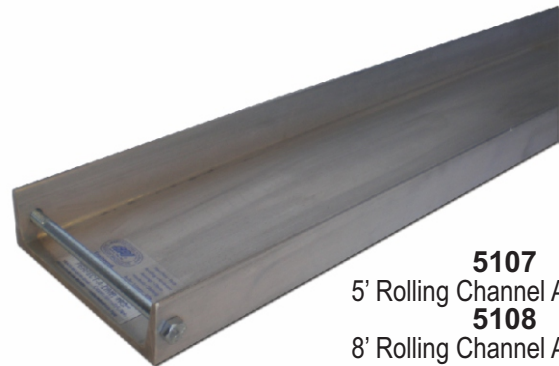
Jack sold separately

5152
2 Point Roller System
20,000 lb Capacity System



Jack sold separately

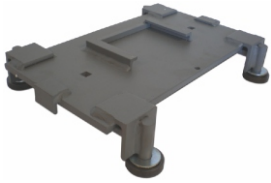
5153
1 Point Roller System
10,000 lb Capacity System



5107
5' Rolling Channel Aluminum
5108
8' Rolling Channel Aluminum

Tools

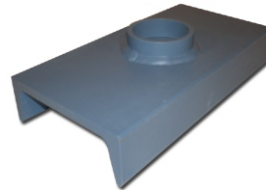
Rollers / Head Plates



5103
Dolly Guide



5104
Head Plate



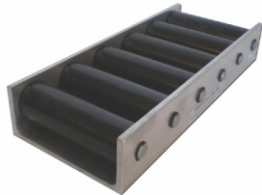
5105
Frame Protector



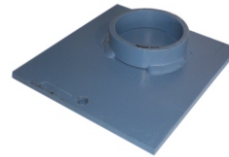
5106
Roller Repair Kit



5101
Lower Roller



5102
Recessed Roller



5150
Jack Adapter Plate



5151
Dolly Guide
Repair Kit



Magnetic Nut Setter
5135 - 5/16"
5136 - 1/14"
5137 - 3/8"



5139
Straps 15'



5145
48" Zip Ties
5146
36" Zip Ties



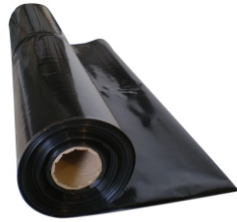
5134
Saw Zall Blade



5148
Tube Cutters

Plastic & Strapping

Barriers / Plastic / Flex Mend / Strapping



7501
14' x 130' 6.0 mil
Plastic Black Roll



7502
30" x 100' Flex Mend
7505
16'4" x 80' Flex Mend



7503
4" x 180'
Flex Mend Tape



7504
5/8" x 3000'
Polyester Strapping



7506
1 1/4" x 800'
Punched Steel Strapping



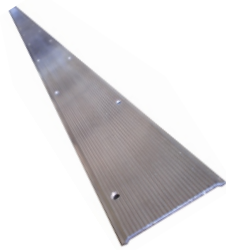
7500
14' x 130' 6.0 mil
White Plastic Roll



7508
14' x 130' 7.0 mil
White Plastic Roll



8113
Non Treated Lumber
1"x2"x8'



8315
2 1/2"x12' Carpet Bar
8320
4" Carpet Bar



2018
Spray Adhesive



7513
Roll of White Tape



Hardware

Bolts / Lags / Screws



5000
1/4" Nut Washer Bolt Set



5001
3/4" Nut
5003
1" Nut



5002
3/4" Nipple
5004
1" Nipple



Anchor Bolt, Nut, Plate
5005 - 5/8"x10"
5006 - 5/8"x12"



5007
3/8"x2 1/4" Red Head



Lags w/ Washers
5008 - 4"x3/8"
5009 - 6"x3/8"
5010 - 8"x3/8"



Tek Screw
5011 - #8x3/4"
5018 - #10x1 1/2"
5019 - #14x1"



5012
#8x1/2" White Head Screw



5013
#8x1" Screw



5014 - #10x1/2" Screw
5015 - #10x3/4" Screw
5016 - #10x1" Screw
5017 - #10x1 1/2" Screw



5020
#14x1 1/2" Screw



5021
Fender Washer
1/4"x1 1/4"



5022
Washer 3/8"



5023
50D Nails



5026
Rim Clamp

Hardware

Nails / Shackle / Bolts / Wheel Bolts



5027
Wheel Bolt Fine Thread



5028
Wheel Bolt
Coarse Thread



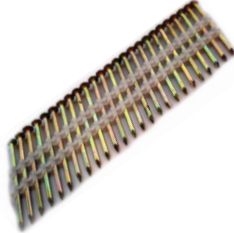
5029
Tongue Bolt,
Washer, Nut



5030
Shackle, Nut, Bolt



5031
16D Short Nails for
Nail Gun Galv Box 3 1/4"



5032
8D Cooler Nails for
Nail Gun Galv 2 3/8"



5034
6D Round Head Nails
for Nail Gun Galv 2x11.3"



Buy The Box
and SAVE

Electrical Supply

Service Entrance Cable / Ground Rod / Ground Clamp



7000

100 AMP Mobile Feed Wire 2-2-2-4 per ft.

7001

100 AMP Mobile Feed Wire 2-2-2-4 500 ft. reel

7002

200 AMP Mobile Feed Wire 4/0 4/0 4/0 2/0 per ft.

7003

200 AMP Mobile Feed Wire 4/0 4/0 4/0 2/0 500 ft. reel

Specifications

Individual conductors of mobile home feeder assembly meet or exceed UL Standard 44, UL Standard 854, Federal Specification A-A-59544, and requirement of the National Electrical Code.

Construction

Mobile home feeder consists of four quadruplexed type RHH or RHW-2 or USE-2 AlumFlex™ AA-8000 series aluminum alloy compacted conductors. The cable contains a triple extruded white striped neutral conductor and a solid green grounding conductor to eliminate the need for field marking per the National Electrical Code. Insulation is sunlight resistant.



7006
ZINSCO 100 AMP
Circuit Breaker



7008
Ground Rod 5/8"x8'



7009
Ground Rod Clamp



7019
J-Box 4"x12"x12"



7036
Ideal Clear Glide



7038
Corrosion Inhibitor

Electrical Supply

Service Pole



7010
50 AMP Pedestal
with Receptical



7011
100 AMP Mobile Home Pedestal
7012
200 AMP Mobile Home Pedestal



7013
100 AMP Private Prop. Pedestal
7014
200 AMP Private Prop. Pedestal



7015
400 AMP Meter Box



7017
Back Feed for Mobile
Home Pedestal



7018
50 AMP Box
with Receptical

7020
25' Pole only

7021
30' Pole only

7023
25' Pole with 200 AMP Meter Box

30' 35' 40' Poles Special Order Available

Electrical Supply

Flex Conduit



7025
1 1/2"x25' Aluminum Flex Conduit

7026
1 1/2"x150' Aluminum Flex Conduit

7027
2"x25' Aluminum Flex Conduit



7054
3/4" Flex Connector

7028
1 1/2" Flex Connector

7031
2" Flex Connector



7029
1 1/2" Flex 90° Connector

7032
2" Flex 90° Connector



7030
1 1/2" Flex Coupling

7033
2" Flex Coupling



7034
50 AMP Power Cord 25 ft.

7035
50 AMP Power Cord 36 ft.

Electrical Supply

Pole Box / Pole Rope / Fittings



7039
1/4"x600' Pull Rope
7040
3/8"x600' Pull Rope



7109
1 1/2" Plastic Locknut
7116
2" Plastic Locknut



Reducer SCH 40
7207 - 1 1/2"x2"
7044 - 2"x2 1/2"
7045 - 2"x3"



7103 - 1" Locknut
7108 - 1 1/2" Locknut
7115 - 2" Locknut
7123 - 3" Locknut



Coupling SCH 40
7100 - 1" Coupling
7105 - 1 1/2" Coupling
7112 - 2" Coupling
7133 - 2 1/2" Coupling
7120 - 3" Coupling
7125 - 4" Coupling



7101
1" Male Adapter SCH 40
7106
1 1/2" Male Adapter SCH 40
7113
2" Male Adapter SCH 40
7121
3" Male Adapter SCH 40



7102
1" Female Adapter SCH 40
7107
1 1/2" Female Adapter SCH 40
7114
2" Female Adapter SCH 40
7122
3" Female Adapter SCH 40

Electrical Supply

PVC / 90° / 45° / Conduit



90° SCH 40
 7200 - 1"
 7202 - 1 1/2"
 7208 - 2"
 7216 - 3"



Sweep SCH 40
 7201 - 1" x 18"
 7203 - 1 1/2" x 18"
 7204 - 1 1/2" x 24"
 7205 - 1 1/2" x 36"



45° SCH 40
 7206 - 1 1/2"
 7213 - 2"
 7233 - 2 1/2"
 7219 - 3"



Sweep SCH 40
 7209 - 2"x18"
 7210 - 2"x24"
 7212 - 2"x36"



Sweep SCH 80
 7211 - 2"x24"
 7218 - 3"x36"
 7221 - 4"x36"



Sweep SCH 40
 7215
 2 1/2"x24"



Sweep SCH 40
 7234 - 3"x18"
 7217 - 3"x36"



Sweep SCH 40
 7220 - 4"x36"
 7236 - 4"x48"



SCH 40 Conduit
 7222 - 1"x10'
 7223 - 1 1/2"x10'



SCH 80 Conduit
 7224 - 1 1/2"x10'
 7226 - 2"x10'
 7228 - 2 1/2"x10'
 7230 - 3"x10'



SCH 40 Conduit
 7225 - 2"x10'
 7227 - 2 1/2"x10'
 7229 - 3"x10'
 7232 - 4"x10'

Electrical Supply

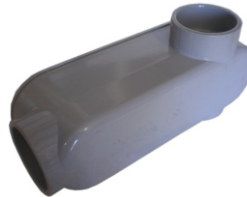
PVC / Fittings / Lugs / Cement



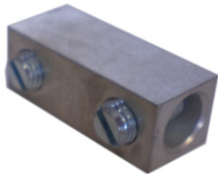
7104
1" LB Access Fittings
7111
1 1/2" LB Access Fittings



7118
2" LB Access Fittings
7124
3" LB Access Fittings



7119
2" LL Access Fitting



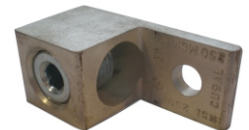
7126
Splicer #2 - 14 GA
7127
Splicer 1/0 - #14 GA



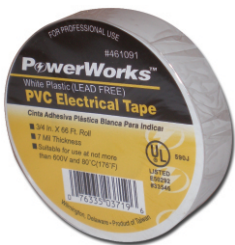
7128
Splicer 250 MCM - #6 Short
7129
Splicer 250 MCM - #6 Long



7131
Lug 2/0 - #14



7132
Lug 250 MCM - #6



2024
White Electrical Tape
3/4" x 60' 7 Mil



2025
Black Electrical Tape
3/4"x60' 7 mil



2028
PVC Gray Cement
Quart



2016
Great Stuff Spray
Foam 12 oz



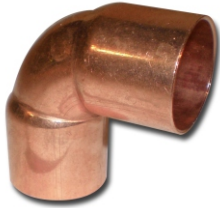
5142
Carbon Monoxide Detector



5143
Smoke Alarm

Plumbing Supply

Copper / Pipe / Fittings



6600
1/2" 90° Elbow
6610
3/4" 90° Elbow



6611
3/4"x1/2" 90° Elbow



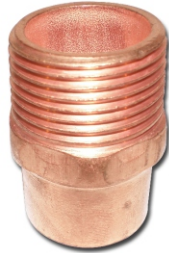
6613
3/4" 90° Street Elbow



5140
Pipe Cutter



6604
1/2" Female Adapter
6620
3/4" Female Adapter



6605
1/2" Male Adapter
6621
3/4" Male Adapter



6601
1/2" Coupling
6614
3/4" Coupling



6615
3/4"x1/2" Reducer Coupling



6618
3/4"x1/2"x3/4" Tee



6619
3/4"x1/2"x1/2" Tee



6602 - 1/2" Tee
6616 - 3/4" Tee



6617
3/4"x3/4"x1/2" Tee



Soft Copper Roll
6606 - 1/2"x60'
6608 - 3/4"x60'



6607
1/2"x10' Hard Pipe
6609
3/4"x10' Hard Pipe



Pipe Insulation
6622
7/8" Id x 1/2" Wall x 6'



Copper Pipe Hanger
6629 - 1/2"
6630 - 3/4"

Plumbing Supply

CPVC / Pipe / Fittings



6218
3/4"x1/2" CPVC Brushing



6201
1/2" CPVC Cap
6209
3/4" CPVC Cap



6202
1/2" CPVC Coupling
6211
3/4" CPVC Coupling



6203
1/2" CPVC 90° Elbow
6208
3/4" CPVC 90° Elbow



90° Street Elbow
6204 - 1/2" CPVC
6212 - 3/4" CPVC



Male Adapter
6205 - 1/2" CPVC
6213 - 3/4" CPVC



6206
1/2" CPVC Pipe Hanger
6224
3/4" CPVC Pipe Hanger



6207
1/2" x10' CPVC Pipe
6214
3/4" x10' CPVC Pipe



6215
3/4"x3/4"x1/2" CPVC Tee



6216
3/4"x1/2"x3/4" CPVC Tee



6217
3/4"x1/2"x1/2" CPVC Tee



6200
1/2" CPVC Tee
6210
3/4" CPVC Tee



CPVC to Brass Adapter
6219 - 1/2" Male
6221 - 3/4" Male



CPVC to Brass Adapter
6220 - 1/2" Female
6222 - 3/4" Female



Ball Valve
6223 - 3/4" CPVC
6225 - 1/2" CPVC



6631
Pipe Hanger

Plumbing Supply

Shark Bite / PVC / Fittings / Pipe



Shark Bite
6240 - 1/2" Coupler
6244 - 3/4" Coupler



Shark Bite
6241 - 1/2" Tee
6245 - 3/4" Tee



Shark Bite
6242 - 1/2" Clip
6243 - 3/4" Clip



Shark Bite
6246 - 1/2" 90°
6247 - 3/4" 90°



Shark Bite
6248 - 1/2" Male Ad
6249 - 3/4" Male Ad



5148
Pipe Cutter
CPVC or PVC



Zip Ties
5145 - 48"
5146 - 36"



6347
1/2" Pipe Insulator



90° Elbow SCH 40
6300 - 3/4" PVC
6306 - 1" PVC



Tee SCH 40
6301 - 3/4" PVC
6307 - 1" PVC



Coupling SCH 40
6302 - 3/4" PVC
6308 - 1" PVC



45° Elbow SCH 40
6303 - 3/4" PVC
6309 - 1" PVC



Ball Valve SCH 40
6304 - 3/4" PVC
6310 - 1" PVC



Pice SCH 40
6305 - 3/4"x20' PVC
6312 - 1"x20' PVC



Adapter SCH 40
6344 - 3/4" PVC Female
6345 - 1" PVC Female



Adapter SCH 40
6346 - 3/4" PVC Male
6347 - 1" PVC Male

Plumbing Supply

Solder / Flux / PVC / PVC / Cement



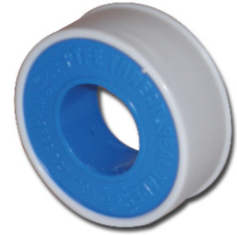
2033
Plumbers Putty



2004
PVC Cement Qrt.



CPVC Glue Cement
2011 - 8 oz.
2034 - Pint
2035 - Quart



2012
Teflon Tape
1/2" x 43'



2030
PVC Wet To Dry
Blue Cement 1/2 Pint.



2003
PVC Cement Pint



2015
Plumbing Tape
3/4" x 10'



2016
Great Stuff
Spray Foam 12 oz.



2017
Duct Tape 2"x240'



Primer Purple
2031 - Quart
2009 - Pint



2037
Rectorseal Pipe Dope

Plumbing Supply

Sweat Stop / Dual Outlet / Solvent Weld



67001 - Sweat Stop
1/4 Turn Stop
1/2" Nom Sweat Inlet
3/8" Comp Outlet



67002
1/4 Turn Stop
1/2" Nom Comp Inlet
3/8" OD Comp Outlet



67003 Solvent Weld
Straight Stop
1/2" Nom CPVC Inlet
3/8" OD Comp Outlet



67007 Solvent Weld
Straight Stop
1/2" Nom CPVC Inlet
3/8" OD Comp Outlet



67004
1/4" Turn Stop
1/2" FIP Inlet
3/8" OD Comp Outlet



67006
CPVC Ice Maker Valve
1/2" CPVC IA Inlet
1/4" Comp Outlet



67005
1/4" Turn Stop
1/2" FIP Inlet
1/4" OD Comp Outlet



6701 - Dual Outlet
1/2" Nom Comp Inlet
1/2" Comp Outlet
3/8" Comp Outlet



67011 - Dual Outlet
1/2" Nom Comp Inlet
3/8" Comp Outlet
1/4" Comp Outlet



67012 - Dual Outlet
1/2" Nom Comp Inlet
3/8" Comp Outlet
3/8" Comp Outlet



6706
3/4" Fip Water Valve



6707
3/4" Sweat Water Valve



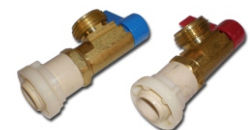
6721
Escutcheon Chrome Ring



6723
Access Panel Small
6724
Access Panel Large



6720
Wash Machine
Box with Valve



6730
Wash Machine
Valves Red or Blue

Plumbing Supply

Flex Lines



6313
Stainless Braided Flex
Closet Connector
3/8" Comp x 7/8" IPS x 12" length



6314
Stainless Braided Flex
Closet Connector
3/8" Comp x 7/8" IPS x 16" length

6315
Stainless Braided Flex
3/8" Comp x 1/2" Fip x 20" length

6316
Stainless Braided Flex
1/2" Comp x 1/2" Fip x 20" length



6317
Stainless Braided Flex
3/8" Comp x 1/2" Fip x 30" length



6336
Ice Maker
Stainless Braided Flex
1/4" Comp x 1/4" Comp x 120"



6326 - Dishwasher
Stainless Braided Flex
3/8" Comp x 3/8" Comp with
3/8" Mip 90° x 72"

6318
Stainless Braided Flex
1/2" Fip x 1/2" Fip x 30" length



6727
Wax Rings



Plumbing Supply

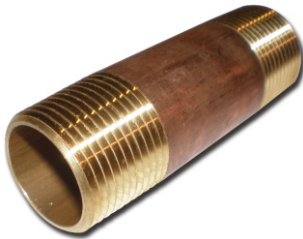
Brass / Valves / Water Sets / Regulators



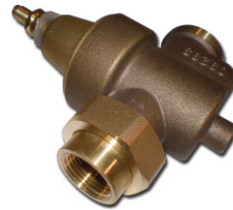
6708
3/4" Brass Tee



6709
3/4" Brass 90° Elbow



6710
1/2"x1 1/2" Brass Nipple
6711
1/2"x3" Brass Nipple
6712
3/4"x1 1/2" Brass Nipple
6713
3/4"x3" Brass Nipple



6714
3/4" Fip x 3/4" Fip
Water Regulator



6718
Vacuum Breaker



6703
3/4" Garden Hose Bibb



6722
Water Set Brass



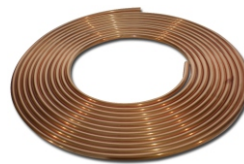
6702
3/4" Hose Bibb Male



Copper Connector
6319
18" Long x 3/4" Fip x 3/4" Fip
6320
24" Long x 3/4" Fip x 3/4" Fip



Copper Connector
6321
24" Long x 3/4" Sweat
x 3/4" Fip



Soft Copper Roll
6606 - 1/2"x60'
6608 - 3/4"x60'

Plumbing Supply

Surrounds / Shower Pans / Tubs



1200L
1200R
27 x 54 Bathtub
Left or Right Drain



1204L
1204R
28 x 54
Shower Pan
Left or Right Drain



1210L
1210R
27 x 54
Permalux Tub
Left or Right Drain
1 Tub per Box

1201
27 x 54
Bathtub
Surrounds



1205
28 x 54
Shower Pan
Surrounds



Plumbing Supply

Shower Drain / Glass Doors



1206
Shower Drain



1203
Toe Touch Drain



1202
Tub Drain



1211
Shower Glass Door
65 3/4" Tall

1212
Tub Glass Door
54" tall

Plumbing Supply

Water Heater Door and Frame

Rough Opening

6338 - 21"x60"

6339 - 20"x60"

6340 - 23"x60"

6341 - 22"x72"

6342 - 26"x78"

Special order sizes available



Rough Opening

6343 - 45"x78"



8414
Putty Tape
3/4'x30'



5013
#8x1" Screw

Plumbing Supply

Water Heater



6323 - 30 Gallon Gas Water Heater
6324 - 40 Gallon Gas Water Heater

- 1"- inch of non-CFC Foam Insulation Reduces Heat Loss
- H.U.D. Approved For Mobile Home Use
- Convertible for Natural Gas or L.P. Gas
- 6 Years Limited Warranty
- Glass Lined Tank and Anode Rod Flight Corrosion for Long Life



6333
Hot Water Heater Pan



6719
Hot Water Heater Strap



6335
 $\frac{1}{2}$ "x24" Gas Flex
with Valve

Plumbing Supply

Gas Flex / Earthquake Valve



Gas Flex Main Supply Line
6328 - 3/4" Fip x 3/4" Fip x 24"
6327 - 3/4" Fip x 3/4" Fip x 36"
6322 - 3/4" Fip x 3/4" Fip x 72"



6330
Horizontal
3/4" Earthquake Valve



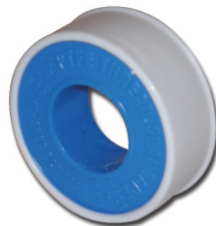
6331
Vertical
3/4" Earthquake Valve



6332
Earthquake Valve Bracket



2023
P.V.C. Pipe Wrap
2"x100'x10 mil



2012
Teflon Tape
1/2" x 43'



2037
Rectorseal



6705
3/4" Gas Valve

Plumbing Supply

Polyethylene Gas Pipe / Fittings / Risers



Polyethylene Gas Pipe

- 6502 - 250' roll 3/4"
- 6503 - 250' roll 1"
- 6504 - 250' roll 1 1/2"
- 6526 - 250' roll 2"

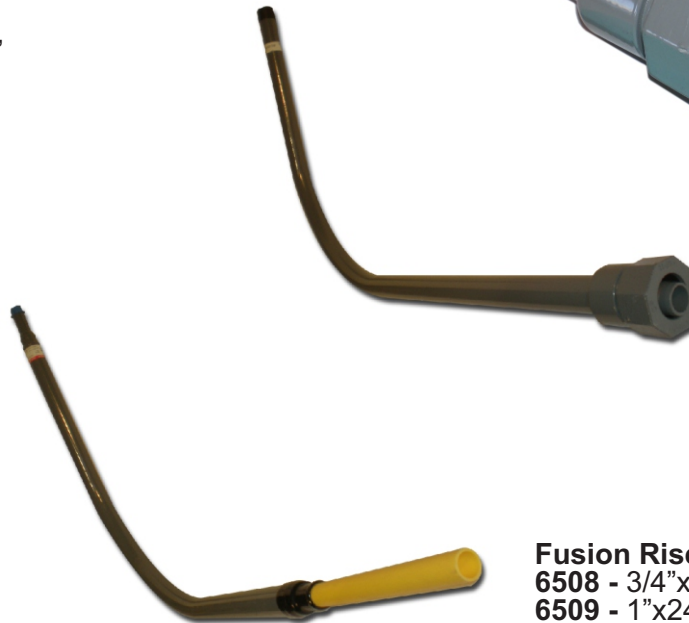


- 6514 Permasert Tee 3/4"
- 6515 Permasert Tee 1"



Permasert Coupling

- 6511 - 3/4"
- 6512 - 1"
- 6513 - 1 1/2"



Fusion Risers

- 6508 - 3/4"x24"
- 6509 - 1"x24"
- 6510 - 1 1/2"x24"



- ### Compression Adapter
- 6521 - 3/4"
 - 6522 - 1"
 - 6523 - 1 1/2"

- ### Compression Risers
- 6505 - 3/4"x24"
 - 6506 - 1"x24"
 - 6507 - 1 1/2"x24"
 - 6527 - 2"x24"



Fusion Coupling

- 6516 - 3/4"
- 6517 - 1"
- 6518 - 1 1/2"



- ### 6519
- 14 Gage Coated Tracer Wire 500' Roll



- ### 6520
- Aluminum Gas Yard Tag



- ### Scotch Coat Pipe
- 6500 - 3/4"x10' Pipe
 - 6501 - 1"x10' Pipe

Plumbing Supply

Black Fittings



6400
3/4"x90° Elbow



6402
3/4"x90° St Elbow



6403
3/4"x45° Elbow



6415
3/4"x1" 90° Elbow



6406
3/4" x 3/4"x1/2" Tee



6407
3/4"x1/2" x3/4" Tee



6404
3/4" Tee



6410
3/4" Cap



6411
3/4" Plug



6413
3/4" Union



6408
3/4" Coupling



6416
3/4"x1" Bell Reducer



6418
3/4" x 1" Bushing



6419
3/4" Close Nipple

Plumbing Supply

Galvanized Fittings



6401
3/4"x90° Elbow



6405
3/4" Tee



6409
3/4" Coupling



6414
3/4" Union



6417
3/4"x1" Bell Reducer



6470
3/4"x1" 90° Elbow



6420
3/4" Close Nipple

Plumbing Supply

Black Pipe / Galvanized Pipe



Black Pipe / Nipple

- 6419 - 3/4" Close Nipple
- 6421 - 3/4" x 1"
- 6423 - 3/4" x 2"
- 6425 - 3/4" x 3"
- 6428 - 3/4" x 4"
- 6430 - 3/4" x 5"
- 6432 - 3/4" x 6"
- 6434 - 3/4" x 7"
- 6436 - 3/4" x 8"
- 6438 - 3/4" x 9"
- 6440 - 3/4" x 10"
- 6442 - 3/4" x 11"
- 6444 - 3/4" x 12"
- 6446 - 3/4" x 18"
- 6448 - 3/4" x 24"
- 6450 - 3/4" x 30"
- 6452 - 3/4" x 36"
- 6454 - 3/4" x 48"
- 6456 - 3/4" x 60"
- 6458 - 3/4" x 72"
- 6460 - 3/4" x 10' Pipe
- 6462 - 1" x 10' Pipe
- 6463 - 1" x 3" Nipple

Galvanized Pipe / Nipple

- 6420 - 3/4" Close Nipple
- 6422 - 3/4" x 1"
- 6424 - 3/4" x 2"
- 6426 - 3/4" x 3"
- 6427 - 3/4" x 4"
- 6429 - 3/4" x 5"
- 6431 - 3/4" x 6"
- 6433 - 3/4" x 7"
- 6435 - 3/4" x 8"
- 6437 - 3/4" x 9"
- 6439 - 3/4" x 10"
- 6441 - 3/4" x 11"
- 6443 - 3/4" x 12"
- 6445 - 3/4" x 18"
- 6447 - 3/4" x 24"
- 6449 - 3/4" x 30"
- 6451 - 3/4" x 36"
- 6453 - 3/4" x 48"
- 6455 - 3/4" x 60"
- 6459 - 3/4" x 72"
- 6461 - 3/4" x 10' Pipe

Roofing

Roof Coat / Roof Patch / Polyester Roof Tape



8418
9" Roller Cover



8419
9" Wire Cage



8420
5' Wood Handle



Chip Brush
8424 - 2"
8422 - 3"
8421 - 4"



Roof Patch
8425 - 1 Gallon
8415 - 3 1/2 Gallon



8416
Arctic Seal
White Roof Coat 5 Gallon



8417
337 Black Emulsion
Roof Coat 5 Gallon



8403
4" x 180' Polyester Roof Tape
8404
6" x 180' Polyester Roof Tape



2026
Geocel
Polyurethane

Roofing

Peel-N-Seal / Rain Gutter / Drip Rail

**10 Year
Limited
Warranty**



White Peel-N-Seal

8400 - 3"x33.5"

8401 - 6"x33.5"

8430 - 12"x33.5"

8426 - 18"x33.5"

8402 - 36"x33.5"



8407
Drip Rail
Aluminum 16' White



8411
1" x 12' Rain Gutter



8429
2" Gutter End Cap



8427
2"x10' Rain Gutter
8428
2"x20' Rain Gutter

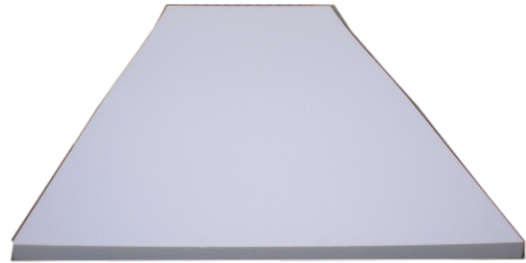
Roofing

Rolled Aluminum Roofing Roof Cap / Roof Vent / Sheet Foam



**20 Year
Limited
Warranty**

8406
.024 Rolled Aluminum
Roof per sq. ft.



8405
1 3/4"x4'x12' Foam Sheet



8413
2" Roof Vent
Galvanized



8413P
2" Roof Vent
Plastic



8410
Ridge Cap



8409
Roof Cap-V
16"x12'



8408
Custom Roof Cap or
Flashing made to order



8414
3/4" x 30' Putty Tape



5013
#8x1" Screw

Skirting

Vinyl Skirting / Allvent Panels / Rail Kit

Allvent Panel 14 pcs



Allvent Panel

16"x12' panel
14 panel per carton

8000 - White

8001 - Sand

8002 - Tan

8003 - Gray

8004 - Beige



Rail Kit



Rail Kit

168 Linear Feet

14 pcs top rail front 11'7"

14 pcs top rail back 11'7"

14 pcs bottom rail 11'7"

Hard Ware Kit

8005 - White

8006 - Sand

8007 - Tan

8008 - Gray

8009 - Beige

Skirting

Vinyl Skirting / Allvent Panel / Rail Sets



Allvent Panel

Allvent Panel
16"x12' panel

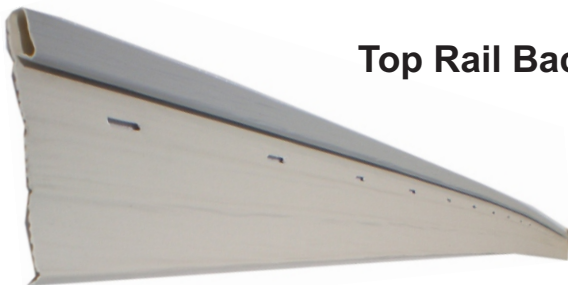
- 8010 - White
- 8011 - Sand
- 8012 - Tan
- 8013 - Gray
- 8014 - Beige



Punch Tool

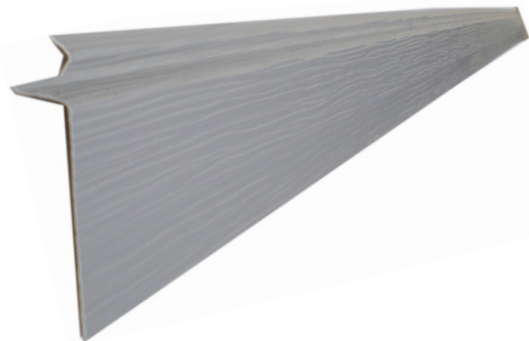


Bottom Rail



Top Rail Back

Top Rail Front



Rail Set

- 1 pc Top Rail Front 11'7"
- 1 pc Top Rail Back 11'7"
- 1 pc Bottom Rail 11'7"

- 8015 - White
- 8016 - Sand
- 8017 - Tan
- 8018 - Gray
- 8019 - Beige

Skirting

Hardie / Smart Panel Treated Lumber / Skirting Vents



8101
Smart Panel 4'x8'
45 Pallet Quantity



8115
4'x8' Hardie Panel
50 Pallet Quantity



8107
1"x2"x8'
Treated Lumber



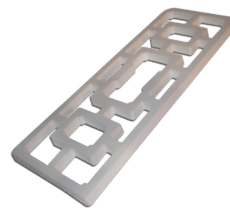
8108
2"x2"x8'
Treated Lumber



Non-Treated Lumber
8114
2"x2"x8'



Non-Treated Lumber
8113
1"x2"x8'



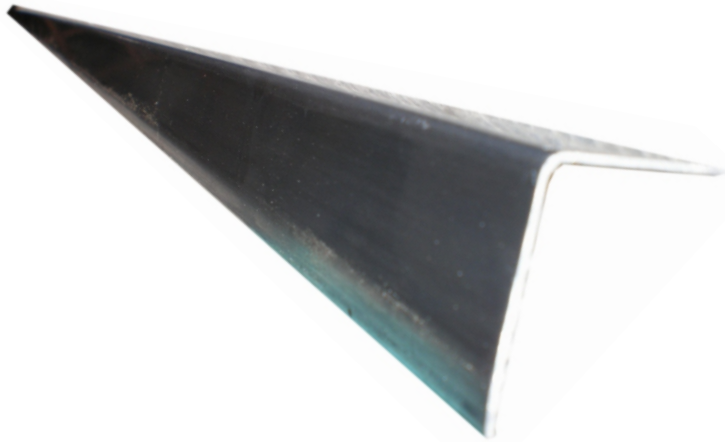
8312
Skirting Vent



2020
Alex Plus

Patio Covers & Decking

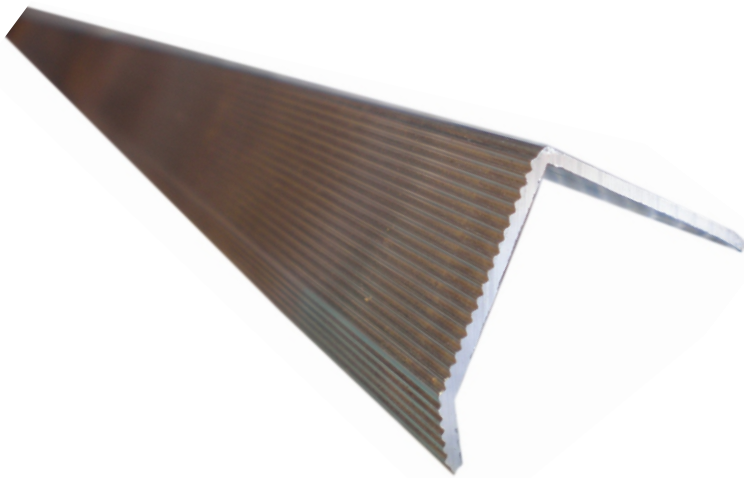
Step Moulding / Carpet Bar



8305/S - Smooth Step Moulding 12'



5152
Trowel



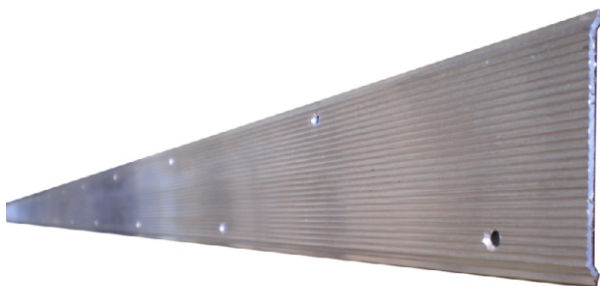
8305 - Step Moulding 12'



5036
Screw Nails



8103
1 1/8"x4'x8' Plywood



8315 - 2 1/2"x12' Carpet Bar
8320 - 4"x12' Carpet Bar

Patio Covers & Decking

Carpet

Plastic Grass



1102
Almond #4



1101
Brown Tan #3



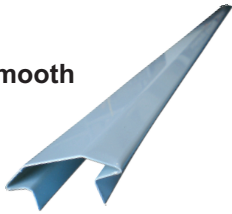
1103
Gray Stone #5



Patio Covers & Decking

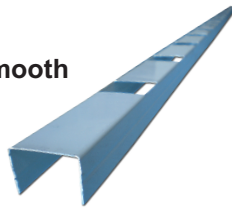
Hand Rail / Post Base / End Caps

Smooth



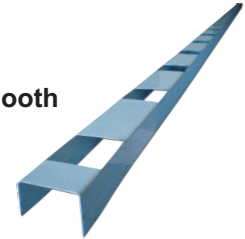
8300/S
Top Rail 10'
8301/S
Top Rail 20'

Smooth



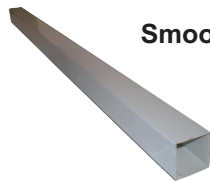
8302/S
Bottom Rail 10'
8303/S
Bottom Rail 20'

Smooth



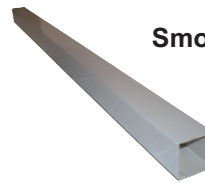
8304/S
Bottom Step 12'

Smooth



8307/S
Pickets 32"
8307/S
Pickets 36"

Smooth



8306/S
Post 38"
8319/S
Post 42"



8310
Post Base Small 4"



8309
Post Base Large 12"



8308
Post Base Ex-Large 30"



8311 - Smooth
Hand Rail End Cap



8313
Hand Rail Corners



8314
Hand Rail Splice

Patio Covers & Decking



Flat Pan Cover
with Trim Kit



Aluminum
Hand Rail

Patio Covers & Decking

Custom Patio Covers
Special Orders Available



Colors



Patio Covers & Decking

TRI-V KIT



- 8200 - 3' Kit per sq. ft.
- 8201 - 4' Kit per sq. ft.
- 8202 - 5' Kit per sq. ft.
- 8203 - 6' Kit per sq. ft.
- 8204 - 7' Kit per sq. ft.
- 8205 - 8' Kit per sq. ft.
- 8206 - 9' Kit per sq. ft.
- 8207 - 10' Kit per sq. ft.
- 8208 - 11' Kit per sq. ft.
- 8209 - 12' - 20' Kit per sq. ft.



2026

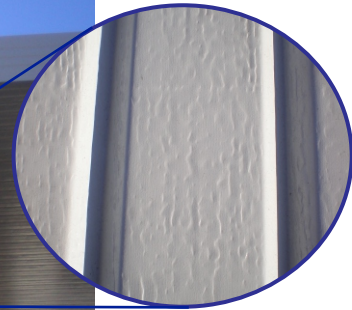
Geocel Polyurethane

FLAT PAN KIT

Embossed



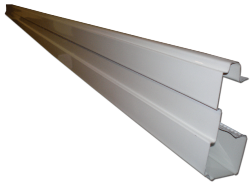
Embossed



- 8200F - 3' Kit per sq. ft.
- 8201F - 4' Kit per sq. ft.
- 8202F - 5' Kit per sq. ft.
- 8203F - 6' Kit per sq. ft.
- 8204F - 7' Kit per sq. ft.
- 8205F - 8' Kit per sq. ft.
- 8206F - 9' Kit per sq. ft.
- 8207F - 10' Kit per sq. ft.
- 8208F - 11' Kit per sq. ft.
- 8209F - 12' -20' Kit per sq. ft.

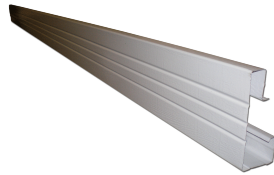
Patio Covers & Decking

Awning Gutters / Pans/Hangers / WindBars



Smooth

8212/S
10' Gutter
8213/S
20' Gutter



Embossed

8212
10' Gutter
8213
20' Gutter



8214
10' Hanger
8215
20' Hanger



8223
Flashing 10'



Embossed

8239
Gutter Splice



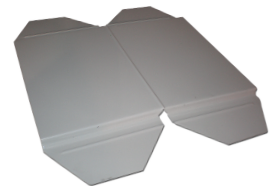
Smooth

8239/S
Gutter Splice



Embossed

8227
White Corner



Smooth

8227/S
White Corner



8211
Tri-V Awning Panel
2' wide



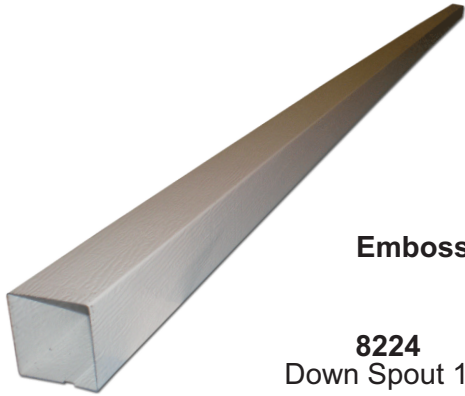
8211/F
6" Awning Panel



8235
Wind Bar 20'

Patio Covers & Decking

Down Spouts / Elbows / Drop Outlet



Embossed

8224
Down Spout 10'



Smooth

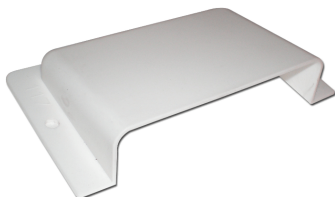
8224/S
Down Spout 10'



8226/S
90° Aluminum Elbow



8226
90° Plastic Elbow



8234
Scupper



8228
Drop Outlet



8238/S
45° Aluminum Elbow

Patio Covers & Decking

Awning Post / Offset Post



8221
2' Offset Post with Foot
8222
3' Offset Post with Foot



Smooth
8219/S
10' Scroll Post
8220/S
12' Scroll Post



Smooth

Smooth Fluted
8216/S - 10'x3"x3" Post
8217/S - 12'x3"x3" Post
8218/S - 14'x3"x3" Post

Embossed
8216 - 10'x3"x3" Post
8217 - 12'x3"x3" Post
8218 - 14'x3"x3" Post



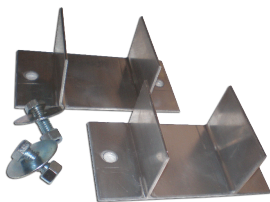
Embossed



8230
Awning Shoe 9"



8229
Awning Foot 1 1/2"



8231
Post Bracket Set 3"x3"



8233
Deadman



Auger Large Top
8232 - 18"
8242 - 20"



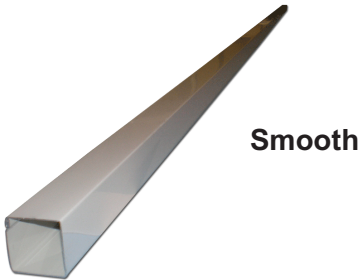
Auger Small Top
8243 - 18"

Patio Covers & Decking

Window Awnings / Privacy Awning

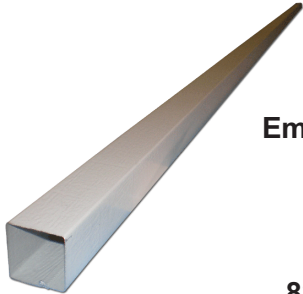


8210
Window Awning
Special Order



Smooth

8225/S
1 1/2" Lock Seam 12'



Embossed

8225
1 1/2" Lock Seam 12'



8236
Privacy Awning
Special Order

Septic / Sewer

Poly Tanks / Fiber Glass Tanks



All Tank Sizes In Stock

Fiberglass Tanks IAMPO Approved

Item	Gal	Type	Lg	Wd	Ht	Inlet	Outlet
9046	350	2/Comp	N/A	50"	60"	44"	41"
9000	750	2/Comp	90"	72"	59"	50"	47"
9001	1000	2/Comp	111"	72"	61"	52"	50"
9002	1200	2/Comp	137"	72"	61"	52"	50"
9003	1500	2/Comp	156"	72"	61"	52"	50"
9004	2000	2/Comp	156"	72"	78"	64"	62"



9026
Tank Filter



Low Profile Norwesco Poly Tanks IAMPO Approved

Item	Gal	Type	Lg	Wd	Ht
9047	750	2/Comp	92"	60"	51"
9007	1050	2/Comp	127"	60"	51"
9008	1250	2/Comp	157"	60"	51"
9009	1500	2/Comp	157"	69"	51"

Septic / Sewer

Risers / Lids



9024
24" Lid



9059T
24" Tuff-Tite Lid



9021
6"x24" Riser



9022
12"x24" Riser



9060
Cut to size x 24" HD Riser



9025
Base Plate



9062
HD Base Plate

**6" and 12" Risers
with Base Plate and 24" Lid**



**HD Riser with
HD Base Plate and 24" Tuff-Tite Lid**

Septic / Sewer

D-Box / Extend Lock / Rosin Paper



Distribution Box

9010 - 4 Way D-Box

9011 - 6 Way D-Box

9056 - 9 Way D-Box



1044 - 4" Extend & Lock



9018
Rosin Paper 36" x 167'



9045
4" Flow Valve

Septic / Sewer

Chambers / Ends



9012
Pro 4 Chambers

9013
Pro 4 Chamber Ends



9014
Pro 4 High Capacity Chamber

9015
Pro 4 High Capacity Chamber Ends



9016
Pro 4 SD 24"

9017
Pro 4 SD 24" Chamber Ends



Septic / Sewer

SCH35 PVC Pipe / Fittings



9039 Solid
4" SDR 35 4"x10'



9039 Perforated
4" SDR 35 4"x10'



9028
4" Coupling



9029
4" 22 1/2° Elbow



9030
4" 45° Elbow



9031
4" Long 90°



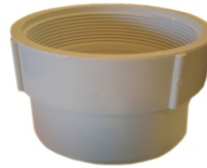
9031 S
4" Short 90°



9033
4" SCH 40 to
4" SCH 35 Adapter



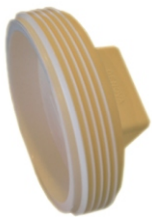
9034
4" Female Adapter



9061
4" Clean out



9035
4" Cap



9036
4" Plug



9037
4" Santee



9038
4" Bull Nose Tee



9041
4" Combo WYE

Septic / Sewer

3" A.B.S. Fittings



6107
3" ABS Male Adapter



6108
3" ABS Female Adapter



6109
3" ABS Cleanout



6110
3" ABS 22 1/2° Elbow



6111
3" ABS 45° Elbow



6112
3" ABS 90° Elbow



6113
3" ABS 90°
Street Elbow



6114
3" ABS 90°
Long Elbow



6115
3" ABS Combo Wye



6116
3" ABS Double
Cleanout



6117
3" ABS Santee



6118
3" ABS Santee Street



6119
3" Rubber Cap



6120
3" ABS Backflow Valve



1600
Sump Pump



1601
Sump Pump
Drain Kit

Septic / Sewer

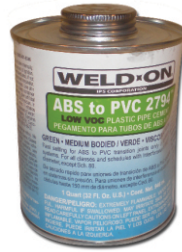
Rubber Couplings / A.B.S. Pipe



**2005 Pint
2006 Quart**
ABS Cement



2007
Premier ABS
Cement Quart



2008
A.B.S. to PVC
Green Cement Qrt.



2028
PVC Gray Cement
Quart



9032
A.B.S. Reducer
3" SCH 40x4" SDR 35



9048
4" Clay to 4" Plastic



6100
3" ABS Plug



6101
3"x3" Rubber Coupler
6122
4"x4" Rubber Coupler



9049
6" Clay to 4" Plastic



6102
3"x4" Rubber Coupler



6103
3" ABS Coupler



6104
3" ABS Pipe



6105
ABS Reducer
3" SCH 40x4" SCH 40



6106
3"x2" ABS Slip Bushing

Cooler

Pump / Roof Jack / Motor Kit



1300
Dura Cool Pad Roll
29"x144"



1301
5500 Pump



1302
7500 Pump



1303
1/4" Float Valve



1304
1/4" x 25' Copper

1305
1/4" x 50' Copper



1320
Copper Water
Hook Up Kit



1308
2 Speed Wall Switch



1307
6 Way Grille



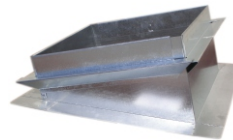
1309
Cooler Leg Kit



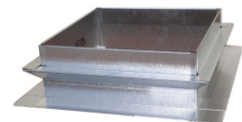
1310
34"x34"x36"
Canvas Cover



1311
1/2" HP 2 Speed
Motor Kit



1324
17"x17" Pitched
Roof Jack



1325
17"x17" Flat Roof Jack

Cooler

Cooler / Wire / Pump Installation Kit



1326
1/4" Brass Union



1312
1/4" Self Tap
Needle Valve



1313
Pump Installation Kits



1314
Mesh Pump Basket



1315
3/4" Brass Sill Cock



1316
1/4" Non Tap
Saddle Valves



1317
SST Ball Valve
with Saddle



1318
1/4" x 1/8" Str
Ball Valve



1322
4500 Cooler
with Motor

1323
4500 Cooler
with No Motor



1306
Quart Cooler
Coating



Doors

In Swing / Out Swing

Custom Made to Order



1400 Out Swing



1401 Out Swing



1402 In Swing

- Drilled for lock and dead bolt
- With or without window
- Pre hung with frame
- Weather resistance

Water Storage Tanks

Vertical DFA Approved Water Tanks

 **Bushman**

 **NORWESCO**



Water Storage Tanks Coming Soon

Sizes ranging from 1100-5000 Gallons



H.V.A.C.

Ducting / Vent



7600
4"x8' Dryer Duct



7601
4"x8' Dryer Vent



Flexible Ducting
7606 8"x25'
7602 10"x25'
7603 12"x25'
7604 14"x25'

Air Conditioner Pad



Air Conditioner Pad

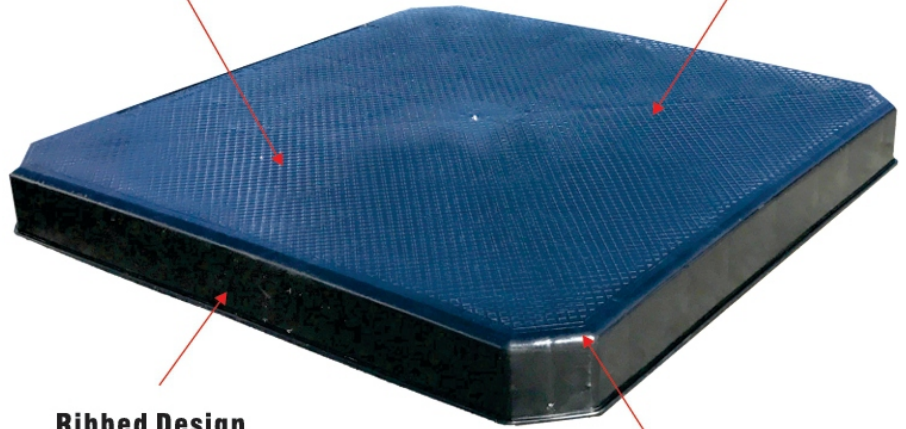
Our Base Pad Line offers over 10 AC pad sizes made from 100% recycled composites made in the United States.



MADE IN USA

Proprietary Design
Distributes weight evenly
resists breakage

Diamond Grip
Designed to
increase traction



Ribbed Design
Uses less raw material
Contributes to economy
Promotes lighter weight

Unique Chamfered Corners
Beveled edge



(AC not included)

Part #	Dimensions	Pallet Quantity
BP24242	24X24X2"	24
BP24243	24X24X3"	16
BP30302	30X30X2"	24
BP30303	30X30X3"	16
BP32322	32X32X2"	24
BP32323	32X32X3"	16
BP36362	36X36X2"	24
BP36363	36X36X3"	16
BP40403	40X40X3"	16
BP36483	36X48X3"	16
Bp18383	18X38X3"	32